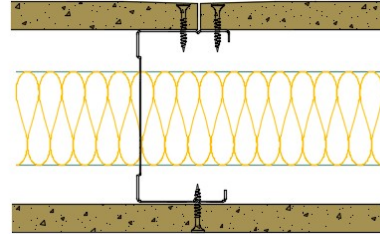


AS92-B-163(50) - SPEEDLINE System Data Sheet - Version V1 (24-10-23)

SPEEDLINE 92mm Acoustic 'C' Stud Partition
 @600mm Ctrs, with BG Gyproc 15mm DuraLine
 each side, 50mm APR



System Performance Breakdown

Fire Resistance:

BS476 Part 22:1987:

Test Ref & Date or Applied Ref & Report:

Max Height:

Thickness:

Duty Grade: BS 5234: Part 2:1992:

Sound Insulation:

60/60 Minutes (Integrity/Insulation).

BTC 17435F - BRE Report P102396-1011A

Refer to Speedline Specification Clause

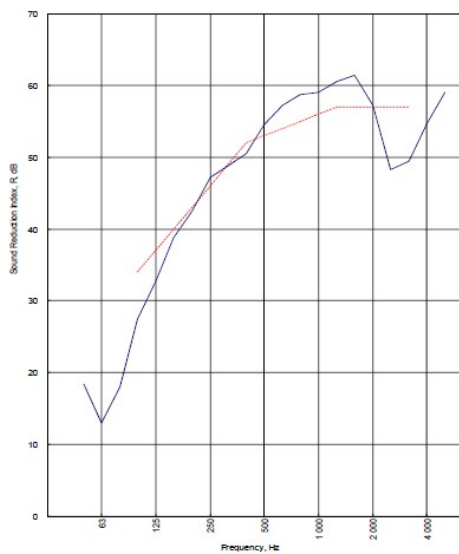
124 mm. (At Base Track, Excluding Finishes)

Severe - Annexes A-F

53 R_w dB, Date Tested or Assessed Against - 01/04/2014

Test Code:
H18667AA
Test Date:
01/04/2014

Freq. Hz	R dB
50	18.4
63	13.0
80	18.0
100	27.4
125	32.7
160	38.8
200	42.4
250	47.2
315	48.8
400	60.5
500	54.5
630	57.2
800	58.7
1 000	59.1
1 250	60.6
1 600	61.4
2 000	57.2
2 500	48.3
3 150	49.4
4 000	54.6
5 000	59.1





Rating according to BS EN ISO 717-1:2013


R_w (C;Ctr) = 53 (-3;-8) dB
 Max dev. 8.7 dB at 2 500 Hz


$C_{50-3150}$ = -8 dB	$C_{50-8000}$ = -7 dB	$C_{100-8000}$ = -2 dB
$C_{50-3150}$ = -20 dB	$C_{10-50-8000}$ = -20 dB	$C_{10-100-8000}$ = -8 dB

TESTED AT ONE OF THE UKAS ACCREDITED LABORATORIES BELOW

B.T.C (H-Ref on Graph) 

B.R.E 

AIRO 

S.R.L 

Customer: Metsec plc Hepsec Division

BTC 18667A: Page 9 of 12



SPEEDLINE Drywall Systems, Adsetts House, 16 Europa View, Sheffield Business Park, Sheffield, S9 1XH.

Tel: 0114 231 8030.

Email: enquiries@speedlinedrywall.co.uk

(As per the requirements set out in ISO/IEC 17025:2017 regarding test data the results stated have been carried out by voestalpine Metsec plc as part of the contract to supply Speedline Metal Sections to SIG Plc)